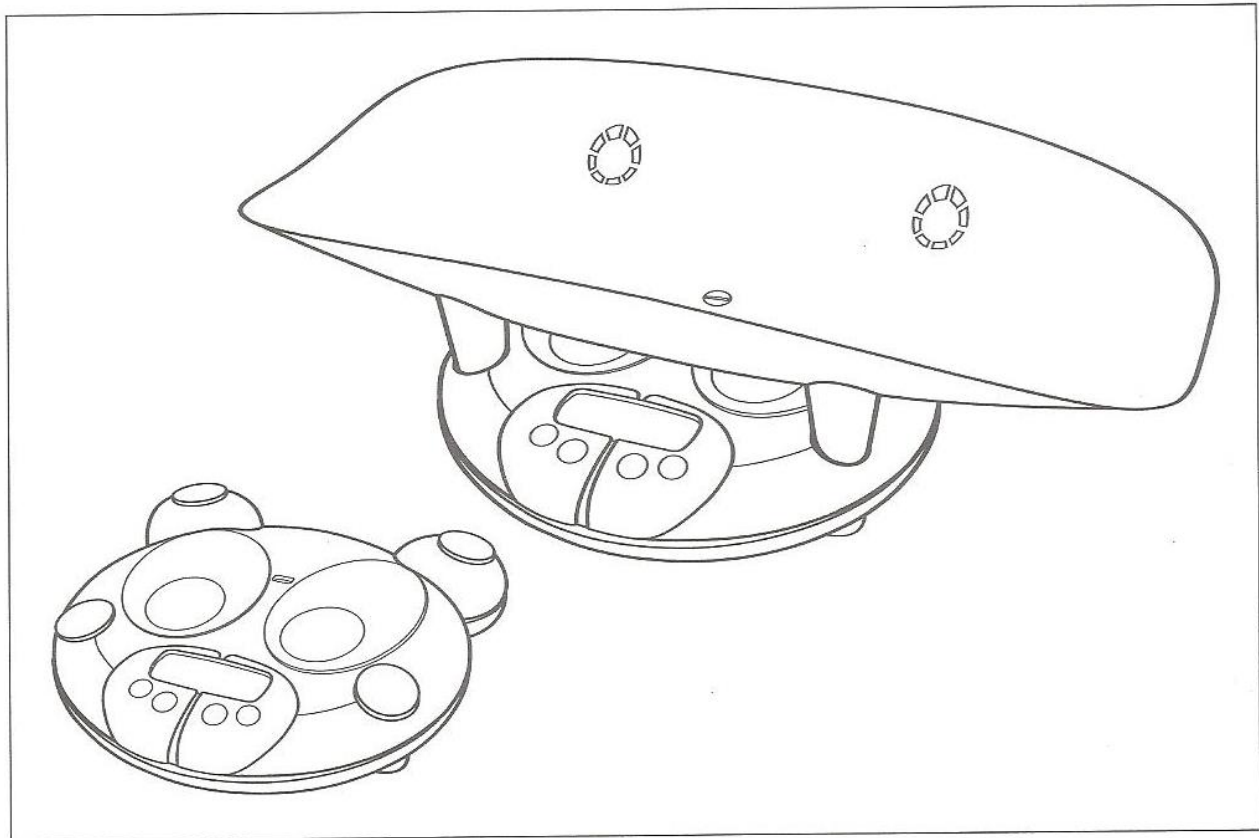

SALTER

Baby Scale

Instructions and guarantee

please read this instruction manual before
using the product for the first time



BALANCE POUR BABE ET ENFANT
Mode d'emploi et garantie

ELEKTRONISCHE BABY UND KLEINKIND WAAGE
Gebrauchsanweisung und garantie

BABYVÆGT
Brugervejledning og garanti

INSTRUCTIONS FOR USE & CARE

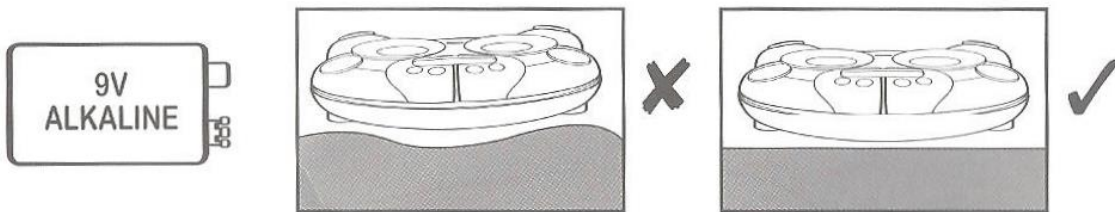
THIS PRODUCT IS INTENDED FOR DOMESTIC USE ONLY
WHEN NOT IN USE, STORE OUT OF THE REACH OF CHILDREN

PREPARING YOUR SCALE

Battery Installation

Open battery compartment on base of scale and insert 1 x 9V Alkaline battery. Close the battery compartment ensuring the battery compartment door is properly secure.

Position the scales on a firm and flat floor surface.

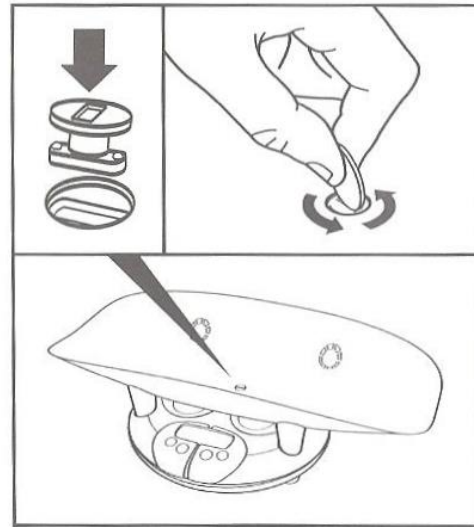


To fit and remove the weighing tray:

For young babies use the weighing tray supplied.

To fit weighing tray:

1. Remove the rubber plugs from the scale platform and store them out of reach of children.
2. Place the baby tray onto the scale platform ensuring that the tray feet insert into the holes on the platform left behind by removing the rubber plugs.
3. Place the locking key into the hole in the centre of the weighing tray.
4. Using a coin twist the locking key 90° anti clockwise.
5. Ensure that the tray is properly secured. You should not be able to remove the tray from the scale platform. Once the tray is secure the scale is ready to weigh your child.

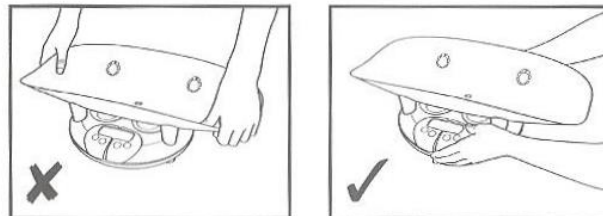


Locking key

To remove weighing tray:

1. Using a coin turn the locking key 90° clockwise. This will release the tray so that it can be removed from the scale platform.
2. Remove the tray, and store the locking key out of reach of children.
3. Place the rubber plugs provided in the holes left behind on the platform surface by removing the tray.
4. Once the rubber plugs are in place the scale is suitable to weigh older babies and toddlers.

How to lift the scale correctly



NOTE: **DO NOT** lift the scale by the tray.
Always support under the scale base.

SAFETY FIRST!

- Treat your scale with care – it is a precision instrument. **DO NOT DROP OR JUMP ON IT.**
- Use the scale on the floor to ensure that if the baby tries to climb or roll out of the scale it will not be injured by any fall.
- Adult supervision is required at **ALL** times. When not in use, store out of reach of children.
- This product is not a toy and should not be used as such.
- Ensure that the weighing tray is always clean and free of anything that could injure the baby.

USING YOUR SCALE

1. If required, place a small towel or changing mat on the tray **BEFORE** switching on.
2. Press ON/OFF button, '8888' will appear in the display and then 0.00 (0.0).
3. Stand (or place the baby in the tray) on the scale.
4. The scale will automatically display the weight.

To select weight mode:

- To switch between weight modes lbs./oz, kg/g simply press the KG/LB button.

Hold function:

- Once a weight reading is displayed press the HOLD button and stand off the scale (or remove the baby from the tray) and the weight reading will be held on the display for 30seconds.

Zero function:

If you wish to weigh your baby in its dry nappy/vest:

1. Switch on the scale and wait for 0.00 (0:0).
2. Place a spare nappy/vest on the weighing tray.
3. Press ZERO and the display will show zero (0.00, 0:0).
4. Remove the nappy/vest and the display will show a negative indication.
5. Place the baby (in its nappy/vest) on the scale.
6. The weight displayed is that of the baby only.

Warning indicators:

- If the display shows 'Err' then too much weight has been placed on the scale.
- If the display shows 'Lo' then the batteries have low power and need replacing.

Advice for cleaning and care:

- Clean your scale using a damp cloth. Do **NOT** use chemical cleaning agents. The tray can be cleaned in warm soapy water. Always dry the tray after cleaning.
- Do **NOT** allow your scale to become saturated with water as this may damage the electronics.