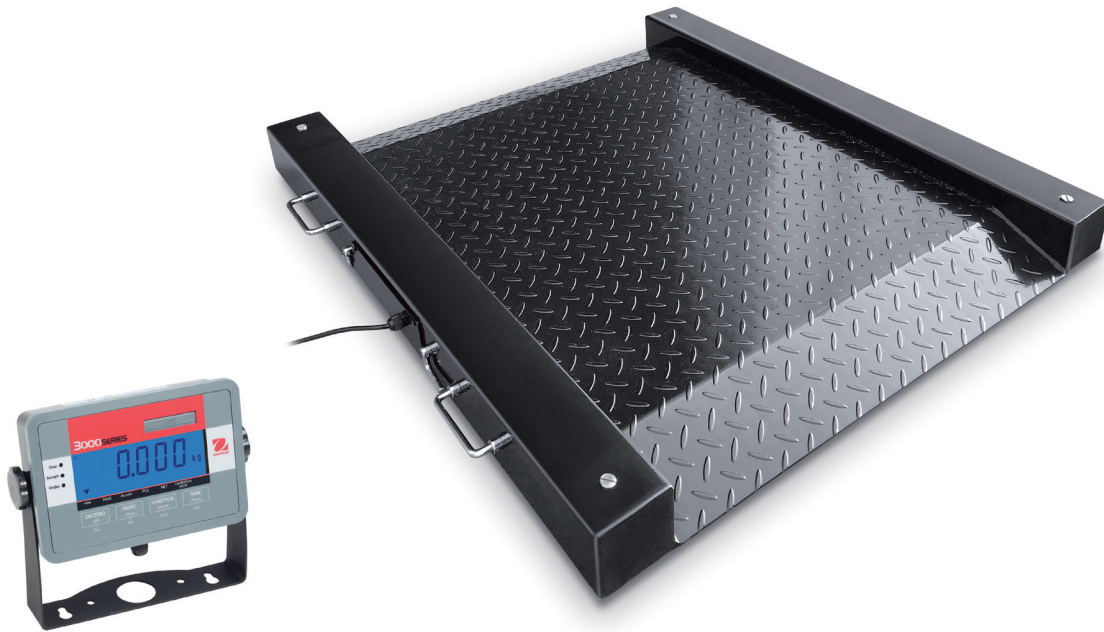




Defender™ 3000 Series

Drum Scale



Convenient Portability with Floor Scale Capacity

Defender 3000 Drum Scale is a durable portable floor scale designed for industrial applications. Defender 3000 features a mild steel treaded platform, built-in front/back access ramps, four load cells, and the popular T32M indicator for clearly displaying weighing results. Includes folding stainless steel cleats to store the 20 ft. indicator cord. For quick transport, the base can be rotated on its side using the stainless steel handles and moved around the shop floor using the two integrated wheels.

Standard Features Include:

- **Choose from Five Models of Varying Sizes & Capacities for Industrial or Shipping Use**

Our Drum Scales come in five models with two platform sizes of 30" x 30" and 36" x 36", and capacities from 500 to 2,500 lb, allowing greater flexibility to best suit your weighing needs.

- **Built Durably to Withstand Demanding Industrial Use**

The OHAUS Drum Scales feature a platform constructed of mild stainless steel with an epoxy paint finish which enables the scale to stand up to heavy industrial use. Items can be weighed on treaded platform or across side rails for larger items.

- **Low-Profile Design & Convenient Portability with Polyurethane Wheels**

Low-profile design with front/back access ramps which allow pallet jacks, dollies, carts and drums to be easily rolled onto the platform. Integrated high-density polyurethane wheels enable convenient portability. Stainless steel handles and cord storage cleats fold flat to side of scale for storage.

Defender™ 3000 Series Drum Scale

Model	DFD32M500ES	DFD32M1000ES	DFD32M2500ES	DFD32M1000ER	DFD32M2500ER
Capacity × Readability	500 lb × 0.1 lb / 250 kg × 0.05 kg	1,000 lb × 0.2 lb / 500 kg × 0.1 kg	2,500 lb × 0.5 lb / 1,250 kg × 0.2 kg	1,000 lb × 0.2 lb / 500 kg × 0.1 kg	2,500 lb × 0.5 lb / 1,250 kg × 0.2 kg
Platform Dimensions	30 × 30 in. / 762 × 762 mm			36 × 36 in. / 914.4 × 914.4 mm	
Deck Material	Painted Carbon Steel, Treaded Surface, Fixed Top Plate				
Feet	4 × Swivel Design, Screw-In, Carbon Steel with Rubber Bottom Cap, Top Adjustable				
Maximum Central Load	100% of Maximum Capacity				
Load Cell	4 × IP67 Nickel Plated Alloy Steel Load Cells, Shear Beam				
Junction Box	IP65, Die-cast Aluminum, with 6 m (19.8 ft) Indicator Cable				
Operating Temperature	50 °F to 104 °F / 10 °C to 40 °C				
Indicator	T32M, ABS Plastic Face Plate, Painted Metal Rear Housing				
Weighing Units	lb, kg				
Modes	Parts Counting, Display Hold, Checkweighing, Weight Accumulation				
Display	6-digit, 7-segment LCD, 25 mm Digit Height, High-Contrast White LED Backlight				
Keypad	4 Function Mechanical Switches and Raised Tactile Keys				
Stabilization Time	Within 2 seconds				
Auto-zero Tracking	Off, 0.5, 1 or 3d				
Zeroing Range	2% or 100% of capacity				
Span Calibration	5 lb or kg to 100% of capacity				
Interface	RS232 Bi-Directional				
Power	100–240 VAC, 50/60 Hz autoswitching wall adapter				
Indicator Dimensions (W × D × H)	7.8 × 1.8 × 5.2 in. / 198 × 46 × 132 mm				
Scale Shipping Dimensions (W × D × H)	41.1 × 40.2 × 7.9 in. / 1,044 × 1,022 × 200 mm			46.9 × 46.3 × 7.9 in. / 1,190 × 1,175 × 200 mm	
Scale Net Weight	101 lb / 46 kg			126 lb / 57 kg	
Scale Shipping Weight	110 lb / 50 kg			135 lb / 61 kg	

Other Standard Features and Equipment

Four nickel-plated shear beam load cells for durable precision secured to alloy steel feet with top height adjustment (includes internal junction box), backlit LCD with fast weight display—includes adjustable filtering levels to meet the requirements of industrial environments, AC adapter (included), Auto-Shut Off feature, Parts Counting and Checkweighing modes for packaging and checking inventories, Accumulation mode allows running tally of totals, Display Hold feature for wheelchair and medical weighing, painted and stainless steel floor stands (available as accessories)

Compliance

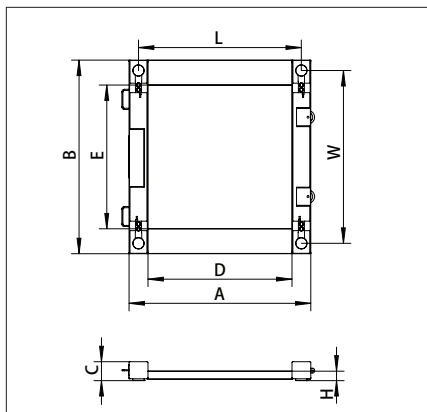
- **Product Safety:** T32MC indicator: CAN/CSA C22.2 61010-1; UL 61010-1; AC adapter: CAN/CSA C22 60950-1; UL 60950-1
- **Electromagnetic Compatibility:** Canada ICES-003 Class B; FCC Part 15 Class B
- **Compliance marks:** T32MC indicator: cCSAus; AC adapter: cULus

Accessories

RS232 Interface Cable to PC 25-pin 80500524
 RS232 Interface Cable to PC 9-pin 80500525
 Printer, Impact, SF40A, AM 30064203
 Printer, Thermal, STP-103, US 80251992

Interface Kit, RS232-USB 30304101
 Interface Kit, RS232-Ethernet 30304102
 Column Kit, Painted, Floor Scale 30531244
 Column Kit, Stainless Steel, Floor Scale 30539553

Dimensions



	30" × 30" 762 × 762 mm	36" × 36" 914.4 × 914.4 mm
A	37.9 in. / 962 mm	43.9 in. / 1,114.4 mm
B	40.4 in. / 1,024 mm	46.1 in. / 1,170 mm
C	4 in. / 100 mm	4 in. / 100 mm
D	30 in. / 762 mm	36 in. / 914.4 mm
E	30 in. / 762 mm	36 in. / 914.4 mm
H	2 in. / 50 mm	2 in. / 50 mm
W	34 in. / 862 mm	41.8 in. / 1,060.4 mm
L	36 in. / 914.4 mm	40 in. / 1,014.4 mm

80775252_C 20221019 © Copyright OHAUS Corporation

OHAUS CORPORATION
 7 Campus Drive
 Suite 310
 Parsippany, NJ 07054 USA

Tel: 800.672.7722
 973.377.9000
 Fax: 973.944.7177

www.ohaus.com

The management system
 governing the manufacture
 of this product is
 ISO 9001:2015 certified.

