



# Executive Pro



Precisa is setting new standards in the demanding area of high-end moisture analysis. The EM 120-HR provides 0.0001g weight readability, 0.001% moisture measurement, and three heater options – combined with ease of use and sophisticated customizing features. The EM 120-HR is ideal for advanced laboratory analysis in a multi-user GLP/GMP/ISO lab environment with many diverse moisture analysis applications and requirements for sample processing, throughput and reporting.

Advanced technology.....

.....expected in the modern Analytical Laboratory, and required for Connectivity



Graphic User Interface

Full graphic display is easily readable in all lighting conditions. Changeable screen labels allow six “soft keys” to be multiplexed to support all applications without needing to refer to a manual.



Real-Time View

The graphic display easily supports three different data views. The three views may be changed while the unit is operating. Weight Loss Plot - may be zoomed to increase screen data resolution. Dashboard – Heat, Time, % Loss. Parameter Check –allows live scroll through parameters to validate active settings.



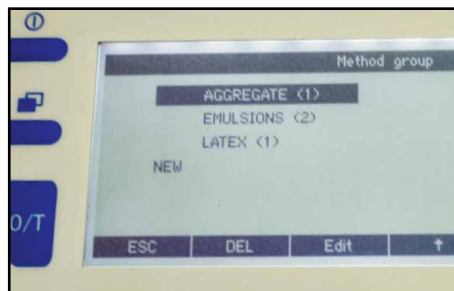
Versatile Connectivity Options

A USB Type B connector is included along with one bay for optional slide in modules. Slide-ins options include RS232, Bluetooth, WiFi, wired Ethernet, and USB host.



Heating Flexibility  
Heat-Steps™, & Heater Options

Up to 3 separate heat intervals (steps) may be programmed for each method, with a separate weight loss result for each interval. Each interval may have different temperature, heat profile, and endpoint conditions. Available with either Halogen, Infrared, or Metal heater to best match sample needs & glass-free requirements.



Expanded Method Memory  
Including Method Groups & Batches

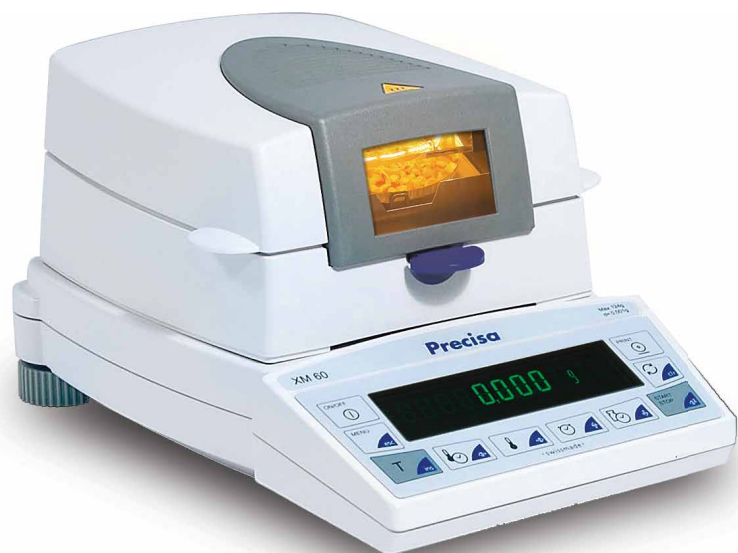
The method memory supports up to 100 methods with all user settings. Methods may be grouped by type of sample, etc. Separate batches with separate statistics may be run for each method.



Customized Reporting

The EM 120-HR includes as standard reports for calibration results are GLP, GMP, and ISO compliant. The reports may be customized with user text and reformatted to meet in-house or client needs. Built-in statistical reporting supports batch processing.

# Laboratory Superior Standard



The XM 60 Series moisture balances were designed for everyday high throughput use in the analytical or quality control lab, supporting established product or material manufacturing. The XM series is available in moderate resolution (XM 60 - 0.001g, 0.01% moisture) or high resolution (XM 60-HR 0.0001g, 0.001% moisture). Both versions also offer a choice of heating options (Halogen, Infrared, or glass-free Metal) - to best match the production applications, sample needs, and FDA/HACCP requirements.



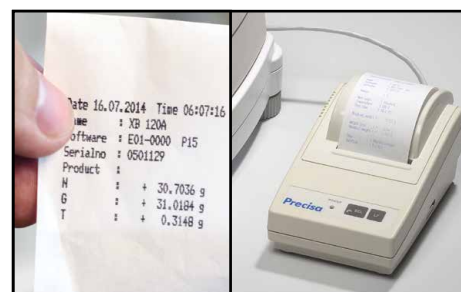
**Resolution choices to match your application**

The XM 60-HR - with high resolution, 0.001% moisture, and memory for 20 methods is the ideal product for many high performance industrial applications, including trace moisture in plastics for injection molding.



**Flexibility in Heater Choice**

Three choices for heater; Halogen, Infrared, or glass-free Metal for FDA/HAACP considerations. Choose the best match for your needs to heat as fast as your samples allow - for best throughput and high quality moisture results without decomposition.



**Connectivity – built-in and options**

RS232 is standard, USB is optional. The XM 60 and XM 60-HR are computer and printer ready with GLP/GMP/ISO compliant print formats with date/time stamp. Data is fully formatted for direct transfer to Windows® applications in Excel®, with optional third-party wedge software.



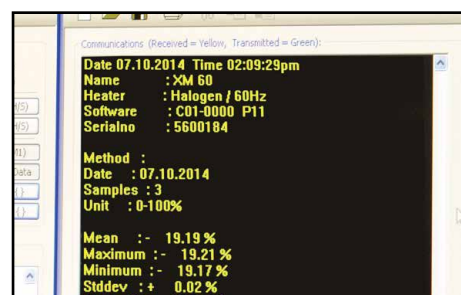
**Programmable Methods**

Up to 20 methods may be set up, stored, and used. Each method will set a target heating temperature, heat rate "ramp" method, and choice of five endpoint (stop) methods including AdaptStop™ - a fully automatic endpoint mode.



**Heat Rate "Ramp" Flexibility**

Heat rate choices of Soft, Standard and Boost provide simple time/temperature profile management - without requiring ramp programming. Soft, Standard and Boost use temperature feedback to provide slow, standard and high heat rate - each including a different rate of approach to a target temperature



**Reports available with single key press.**

The XM 60 Series includes Key-Select™ Mode for single key press reports. Simply press print and hold until the desired report is listed in the display, then release for print or RS232 output to computer. All reports include date/time stamp. Reports are available for statistics, status, and applications.



### Executive Pro

 Made in Switzerland

### Laboratory Superior Standard

 Made in Switzerland

Model	EM 120-HR	XM 60-HR	XM 60
Weight Calibration	Automatic internal (SCS)	External manual	External manual
Temperature Calibration	Two point (100/160C)	Two point (100/160C)	Two point (100/160C)
Capacity	124 g	124 g	124 g
Readability - g	0.1 mg (0.0001 g)	0.1 mg (0.0001 g)	1 mg (0.001 g)
Readability - % moisture	0.001%	0.001%	0.01%
Recommended Minimum Sample	5 g	5 g	5 g
Repeatability	0.1 mg	0.1 mg	1 mg
Linearity	0.2 mg	0.2 mg	1.5 mg
Sensitivity Drift	(10...30°C) 1.5 ppm / °C	(10...30°C) 1.5 ppm / °C	(10...30°C) 1.5 ppm / °C
Stabilization Time	< 3 seconds	< 3 seconds	< 2 seconds
Temperature Range	30-230°C, 1° increments	30-230°C, 1° increments	30-230°C, 1° increments
Heat Source	Halogen, Infrared, Metal (glass-free available)		
Normal Operating Environment	50°F to 85°F (10°C to 30°C) at 85% RH non-condensing		
Ultimate Operating Environment	0°C to 40°C at 70% RH non-condensing for SCS equipped units		
Weighing Units	% moisture (% weight loss), % solid (% residue), g/kg, residual, Loss		
Available Languages	English, French, German		
Tare Range	100% Subtractive		
Power Source	120VAC 50/60Hz 6.5A), 450 Watt		
Construction	Die cast aluminum		
Display	Backlit Grapic LCD	Vacuum Fluorescent Display	Vacuum Fluorescent Display
Pan Size	3.54 in / 90 mm diam	3.54 in / 90 mm diam	3.54 in / 90 mm diam
Sample Pan Maximum Volume	45 mL nominal full at level - in 3.8 x 3.54 x 0.3 in / 96 mm x 90 mm x 7mm pan		
Overall Dimensions (W x D x H)	9.5 x 14.2 x 7 in 240 x 360 x 178 mm	8.3 x 13.4 x 7 in 210 x 340 x 178 mm	8.3 x 13.4 x 7 in 210 x 340 x 178 mm
Connectivity	Standard: RS-232, USB Optional: Bluetooth, Wifi, Ethernet	Standard: RS-232 Optional: USB to RS-232 Adapter	Standard: RS-232 Optional: USB to RS-232 Adapter
Net Weight	14.8 lb / 6.7 kg	13 lb / 5.9 kg	13 lb / 5.9 kg
Shipping Weight	18.2 lb / 8.3 kg	16.1 lb / 7.3 kg	16.1 lb / 7.3 kg

## Features

## EM Series

## XM Series

Features	EM Series	XM Series
Display		
 SCS Auto Self Calibration System (time /temperature)	✓	
 External calibration		✓
 RS 232 Interface	RS-232 (DB9F)	RS-232 (RJ45)
 USB Interface	USB-B	Optional USB adapter
 Slide-in modules	Optional: Wifi, Ethernet, Bluetooth	
Software upgrade by download	Free Precisa download utility on web site	
Direct to Windows® Application	Wedge software available as optional third party software	
 Anti theft code	✓	✓
 Anti theft ring	✓	✓
Keyboard	12 keys - 6 soft keys	10 keys
 Clock (for GLP / GMP formats)	✓	✓
Heat Source Options	Halogen, Infrared, Metal (glass-free)	
Heat Rate (“Ramp”) Modes	Soft, Standard, Boost	
Endpoint (Stop) Modes	AdaptStop (Auto), $\Delta$ mg/sec, $\Delta$ %/sec, Min %, Max time – adjustable	
Method Parameters	Heat Ramp Mode, Temperature, Endpoint Mode	
Methods Memory	100	20
Max Heat-Steps™/ Method	3	1
Display views live during heating by user choice at any time.	Dashboard, Weight Loss Plot, Parameter Check	Single view, 2 alpha-numeric lines
Real-time weight loss screen plot	✓	
Included reports and features	Printable GLP/GMP/ISO, Statistical results, Calibration reports, Computer Ready, Print ready for optional 40 character serial printer	
Customizable reports	✓	
Key-Select™ Report - Print mode		Statistics, Status, Applications



# About Precisa Gravimetrics AG


Uncompromising quality standards in research, manufacturing, design and after-sales service have made Precisa one of the leading brands in weighing instruments world-wide. The result is a state-of-the-art product range, which fully reflects traditional Swiss characteristics such as precision, quality and reliability –along with a complete range of customer specific benefits. Precisa instruments contain the features necessary to perform tests accurately and record results simply and efficiently. Precisa, with distribution in more than 100 countries around the world, is a division of Techcomp Europe Group, a leading manufacturer and distributor of analytical instruments, life science equipment and laboratory instruments.



# About Intelligent Weighing Technology, Inc.



Intelligent Weighing Technology supplies a complete range of high-quality laboratory balances, industrial scales, load cells, and weighing accessories to the North American market. Its leadership team has more than 65 years' experience in the weighing and measurement business, both in the USA and worldwide. With its 8,000 square foot facility, Intelligent Weighing Technology offers increased product inventory for faster shipping. Built on a cornerstone of quality, precision, and service, Intelligent Weighing Technology provides its customers with the equipment they need, right on time.

 EM & XM Series manufactured by Precisa in Switzerland in an ISO 9001 certified facility

Intelligent-Lab™ is a trademark of Intelligent Weighing Technology, Inc.  
Precisa® is a registered trademark of Precisa Gravimetrics AG

  
Weighing Technology

Intelligent Weighing Technology, Inc.  
intelligentwt.com  
Rev: Moisture 7/14